

The Details.

THE SHELDON BALLROOM

Includes 25 tables, with 8 to 10 chairs per 66" round table.

Sunday through Thursday \$1,000

Friday and Saturday \$1,400

LOUIS SPIERING ROOM

Includes 50 tables, with 8 to 10 chairs per 66" round table.

Monday through Sunday

0-250 guests \$1,700

250-350 guests \$2,000

350-500 guests \$3,000

RENTAL FEE FOR BOTH OF THE ABOVE INCLUDES:

- Use of The Sheldon space for four (4) hours
- Facility Manager for four (4) hours
- Security for four (4) hours
- Guest Coatroom

ADDITIONAL SERVICES

- Advanced Technical Services
4-hour minimum, per call \$45/hour
- Coatroom Attendant(s)
Per attendant, per evening, tipping allowed. \$50
Per attendant, per evening, no tipping \$75
- After-Hours Rehearsal/Set-Up \$50/hour
4-hour minimum, per call

15% discount available for Non-Profit Organizations.
Must provide a letter of tax exemption to The Sheldon.

The Details.

SHELDON CONCERT HALL

RENTAL FEE

Sunday through Thursday \$1,800

Friday and Saturday \$2,200

RENTAL INCLUDES

- Use of the Sheldon Concert Hall for four (4) hours
- Greenroom for artist hospitality and post-concert receptions
- Security for four (4) hours
- Facility Manager for four (4) hours
- House Manager & Ushers, by advance request, based upon availability

ADDITIONAL SERVICES

- Advanced Technical Services
Minimum 4-hour charge, per call \$45/hour
- Box Office Personnel \$100 per person/evening
- Merchandise Salesperson \$25 per person/evening
All merchandise sales subject to 20% commission.
- Coatroom Attendant(s)
Per attendant, per evening, tipping allowed. \$50
Per attendant, per evening, no tipping \$75
- After-Hours Rehearsal/Set-Up
Minimum 2-hour charge, per call \$50/hour

15% discount available for Non-Profit Organizations.
Must provide a letter of tax exemption to The Sheldon.

RENTAL FEE

Any day \$300/hour, 2-hour minimum

RENTAL INCLUDES:

- Security in Emerson Center building
- Facility Manager, Gallery Ushers & Guest Coatroom

No discount available for Non-Profit Organizations.

KEMPER ATRIUM AND SHELDON ART GALLERIES

The Sheldon Wedding.

*Make your wedding day
memorable and convenient
for you and your guests by
hosting both the wedding
ceremony and reception in
the gracious elegance of
The Sheldon.*

The Sheldon Wedding gives discounted rates for access to all areas of The Sheldon on your special day: The Greenroom for groomsmen and groom, Dressing Rooms for bridesmaids and bride, the Concert Hall for your wedding ceremony, the Atrium Lobby for a cocktail reception, and finally The Sheldon Ballroom for dinner and dancing.

RENTAL FEE
\$ 2500.00

RENTAL INCLUDES:

- Greenroom and Dressing Rooms prior to ceremony
- Rehearsal during normal business hours
- Concert Hall for two (2) hours
- Atrium Lobby for one (1) hour
- Ballroom for four (4) hours
- Security in main lobbies

ADDITIONAL SERVICES OFFERED:

- Advanced Technical Services
Minimum 4-hour charge, per call \$45/hour
- Coatroom Attendant(s)
Per attendant, per evening, tipping allowed. \$50
Per attendant, per evening, no tipping \$75
- After-Hours Rehearsal/Set-Up
Minimum 2-hour charge, per call \$50/hour

Sheldon Preferred Caterers.

CATERING SERVICE AT THE SHELDON

For convenience and flexibility, The Sheldon allows any licensed Missouri catering firm to provide food and service for events. All caterers must show proof of liability insurance, workman's compensation for servers, and state business license. The Sheldon has a preferred list of caterers. If you choose a caterer not on the preferred list we will ask their representative to meet with us and provide copies of the above documentation.

A \$3.00 per person catering fee is added to all contracts which do not utilize a caterer from The Sheldon preferred catering list.

Call any of the seven preferred caterers listed, and they will be happy to help plan your event.

HENDRI'S CATERING
4501 Ridgewood Avenue
St. Louis, MO 63116
314.752.4084
www.hendris.com

ORLANDO'S
Sam Orlando
4300 Hoffmeister
St. Louis, MO 63125
314.638.6660
www.orlandogardens.com

LACHEF CATERING
7169 Manchester Road
St. Louis, MO 63143
314.647.5350
www.lachef.com

PAIRINGS A CATERING COMPANY
Karen Bartelsmeyer-Jones
800 North Tucker Suite 412-J
St. Louis, Mo 63101
314.707.7598

CATERING YOUR WAY BY LISA
6432 Gravois
St. Louis, MO 63116
314.481.5500
www.cateringyourwaybylisa.com

SOMETHING ELEGANT CATERING LLC
Linda Pilcher
2200 Yale Avenue
St. Louis, MO 63143
314.781.7722
www.somethingelegantcatering.com

RUSSO'S GOURMET CATERING
9904 Page Avenue
St. Louis, MO 63132
314.427.6771
www.russosgourmet.com

Sheldon Beverage Service.

The Sheldon offers you and your guests the finest in specialty, imported, and premium beverages for every event.

Whether you choose a Premium Bar, House, Domestic Bar Package or our Cash Bar Service, your guests will experience exemplary service and refreshing drinks. *An 18% Service is added to all Beverage Service Fees. If no tip jar, automatic \$100 tip per bartender will be added to contract.*

- Non-Alcoholic Open Bar: Minors only, unless otherwise agreed on by client and The Sheldon
- The Sheldon uses plastic barware for beverage service. Clients may request glass barware at additional cost.

CASH BAR

Deposit of \$125 per bar/One bartender per every 100 people.
Deposit refundable if each bar makes \$300

TALLY BAR

Sheldon cash bar price of \$5.00 per drink, billed to client, plus bartender fees, plus 18% and tip (\$100/bartender)

EXTRA BARTENDERS

- Bartender: \$125.00
- Bar Back: \$ 75.00

No liquor can be donated for your event and liquor cannot be brought in from an outside source, due to The Sheldon having the liquor license. NO EXCEPTIONS.

PREMIUM OPEN FULL BAR

\$20.00 pp / 4-hours plus 18% Beverage Service Fee and tip (\$100/bartender)

All liquors (premium): Jack Daniels Black, Maker's Mark, Crown Royal, Bacardi Light Superior, Captain Morgan Spiced, Chivas Regal, Glenlivet 12-year, Bombay Sapphire, Gray Goose, Disaronno Amaretto, Triple Sec

Microbrew and Domestic Beers

Premium Wine Assortment

Dasani water, cranberry juice, orange juice

By request – finalized by contract prior to your event: Jose Cuervo Gold Tequila, Martell Cognac, Teas – flavored/iced

HOUSE OPEN BAR

\$17.00 pp / 4- hours plus 18% Beverage Service Fee and tip (\$100/bartender)

Jack Daniels Black Label, Bacardi Light Superior, Dewar's White Label, Beefeater Absolut, Disaronno Amaretto

Microbrew and Domestic Beers

Premium Wine Assortment

Assortment of sodas, cranberry, and orange juice

BEER, WINE, SODA

\$13.00 pp / 4-hours plus 18% Beverage Service Fee and tip (\$100/bartender)

Microbrew and Domestic Beers

Premium Wine Assortment

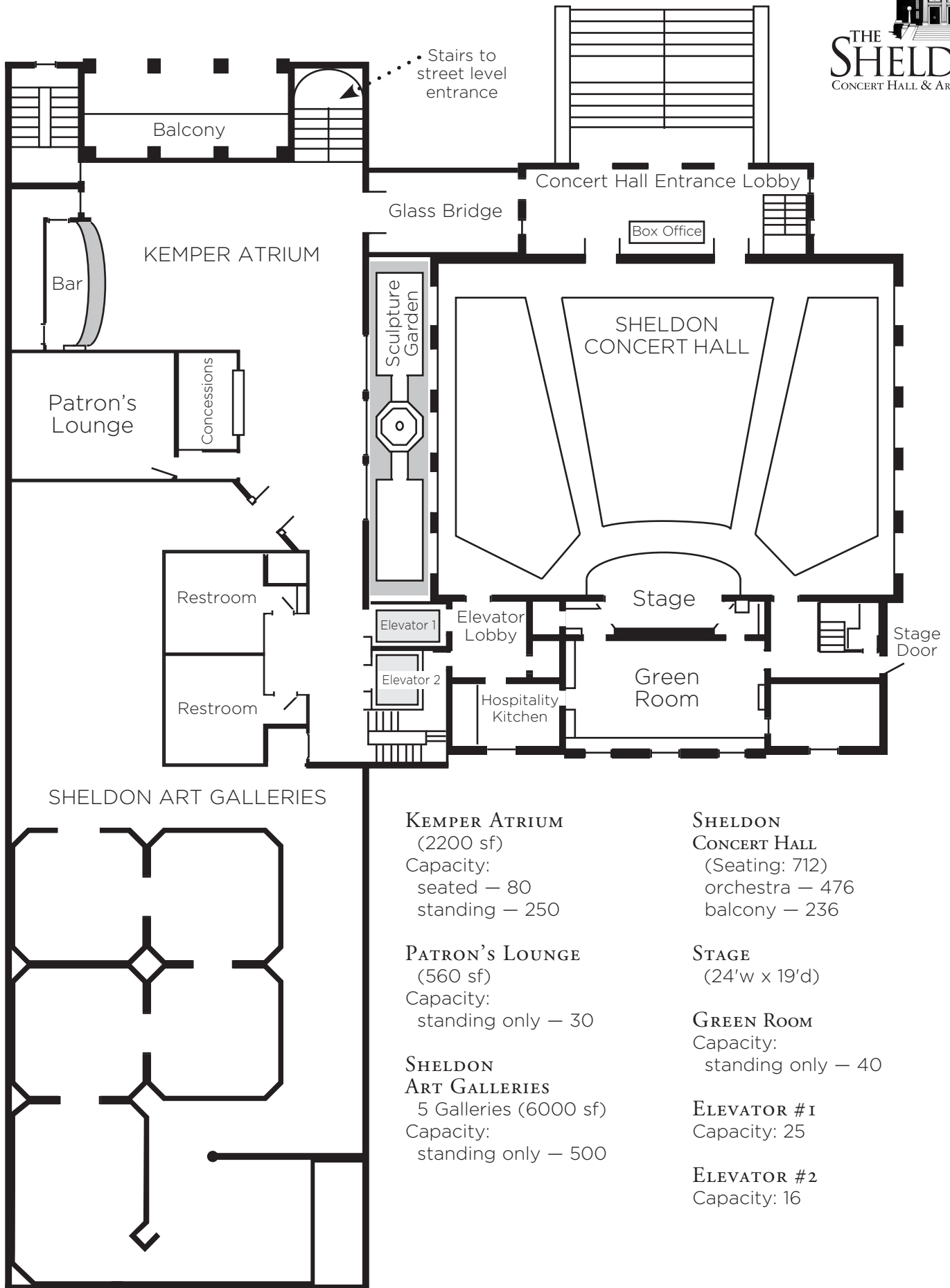
Assortment of sodas, cranberry, and orange juice

NON-ALCOHOLIC OPEN BAR (MINORS ONLY)

\$6.00 pp / 4-hours plus 18% Beverage Service Fee and tip (\$100/bartender)

Assortment of sodas, cranberry, and orange juice

FULL FACILITY *Level 2*



KEMPER ATRIUM
(2200 sf)

Capacity:
seated — 80
standing — 250

PATRON'S LOUNGE
(560 sf)

Capacity:
standing only — 30

SHELDON ART GALLERIES
5 Galleries (6000 sf)

Capacity:
standing only — 500

SHELDON CONCERT HALL

(Seating: 712)
orchestra — 476
balcony — 236

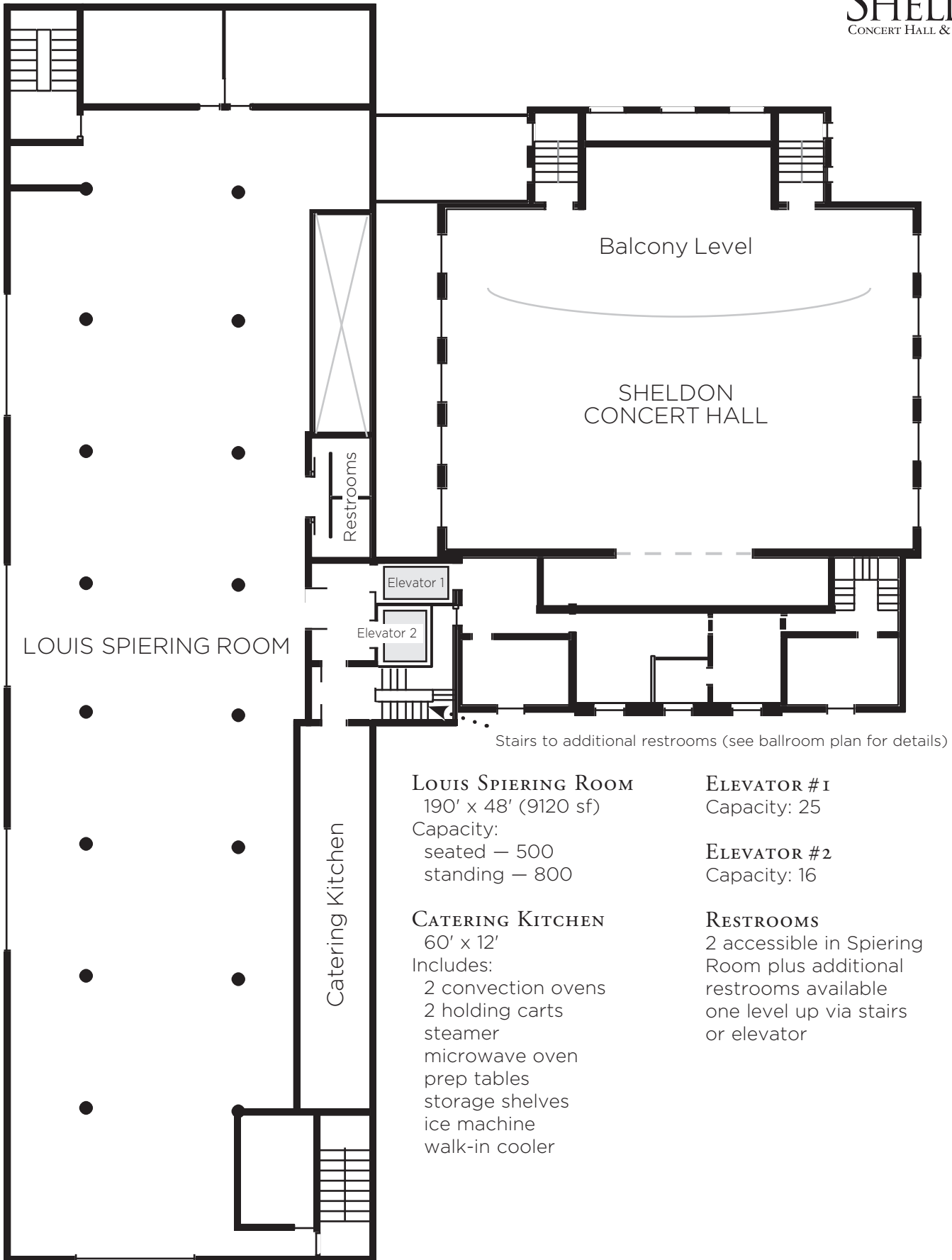
STAGE
(24'w x 19'd)

GREEN ROOM
Capacity:
standing only — 40

ELEVATOR #1
Capacity: 25

ELEVATOR #2
Capacity: 16

LOUIS SPIERING ROOM *Level 3*



LOUIS SPIERING ROOM

190' x 48' (9120 sf)

Capacity:
seated – 500
standing – 800

CATERING KITCHEN

60' x 12'
Includes:
2 convection ovens
2 holding carts
steamer
microwave oven
prep tables
storage shelves
ice machine
walk-in cooler

ELEVATOR #1

Capacity: 25

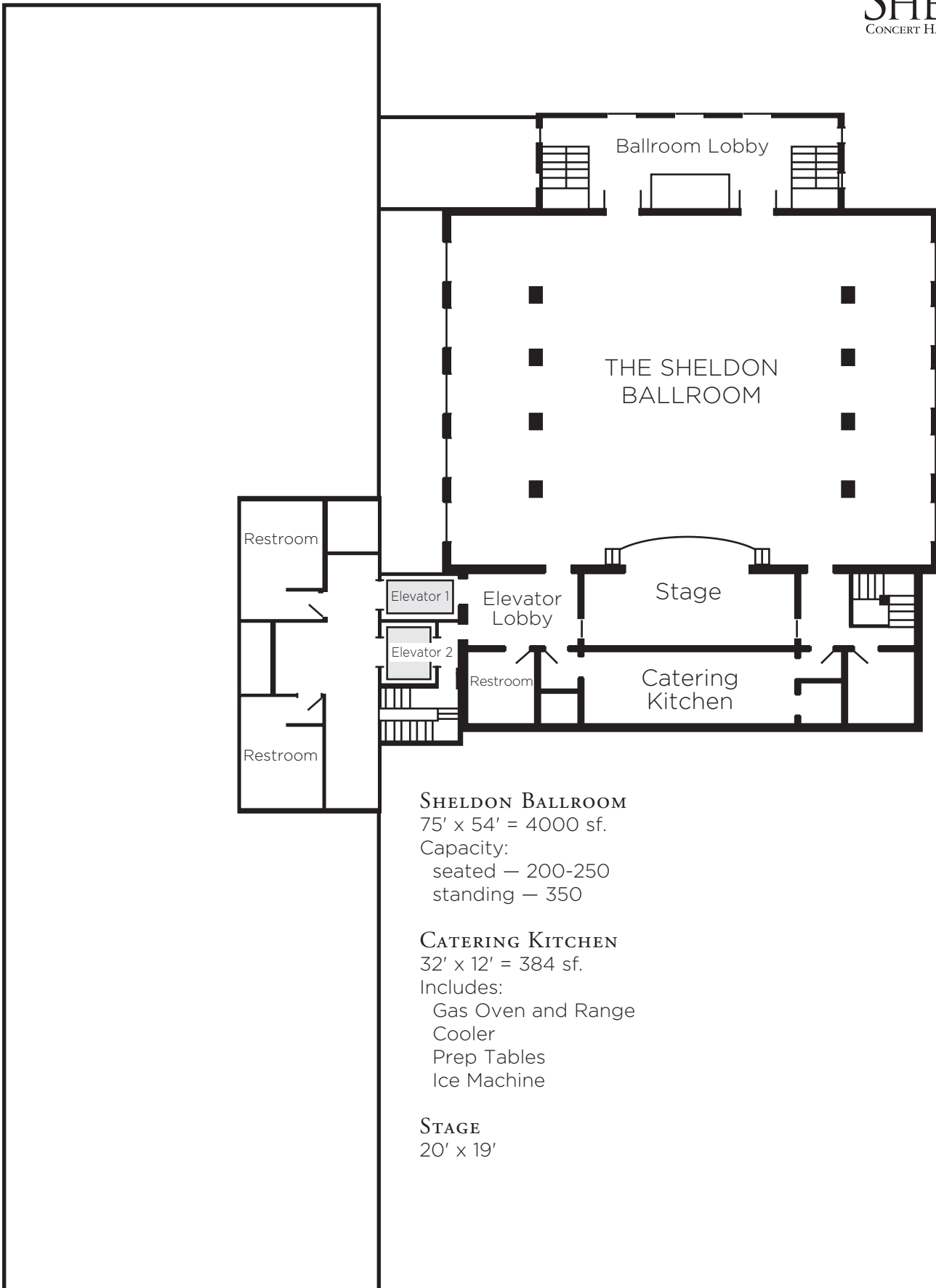
ELEVATOR #2

Capacity: 16

RESTROOMS

2 accessible in Spiering Room plus additional restrooms available one level up via stairs or elevator

THE SHELDON BALLROOM *Level 4*



SHELDON BALLROOM

75' x 54' = 4000 sf.

Capacity:

seated – 200-250

standing – 350

CATERING KITCHEN

32' x 12' = 384 sf.

Includes:

Gas Oven and Range

Cooler

Prep Tables

Ice Machine

STAGE

20' x 19'